



# Current Report

Oklahoma Cooperative Extension Fact Sheets are also available on our website at:  
<http://osufacts.okstate.edu>

## Grain Bin Entrapment: What If It Happens to You?

### A Case Study from an Oklahoma County Elevator

Jim P. Allen  
Extension Engineer

Ronald T. Noyes, P.E.  
Extension Agricultural Engineer

#### Introduction

A man unloading wheat from a grain bin was trapped for nearly five hours when his foot became caught under the side of a sweep auger motor and he was buried in grain above his waist. The following information was collected from elevator personnel and rescuers involved in this grain entrapment incident. The names and location of the elevator are not listed to protect the privacy of the people involved. This report illustrates how this type of incident could occur at other grain handling facilities, and provides safety guidelines that could help other elevators avoid this type of situation or react more positively if a grain entrapment should occur.

#### Cause of Entrapment

On January 25, 1994, an Oklahoma country elevator was unloading wheat from a 200,000-bushel, corrugated steel bin. The wheat had drained to a level that exposed the sweep auger and motor installed at the bottom of the bin. Three drain ports underneath the conveyor from the center to the bin wall near the side entry door were open, leaving an irregular cone of wheat sloping up from the center of the bin on three of the four sides.

At about 11:30 a.m., a worker entered the bin to plug in the sweep auger motor. The worker stood on top of the motor while unwrapping the cord from around the motor in order to plug it in. While unwrapping the cord, his foot slipped off the motor into the grain and slid under the side of the motor. When his foot slipped off the motor it triggered a grain slide. Instantly, grain began to flow around his leg. His foot wedged under the motor, and he could not pull his leg out of the grain. As he struggled to remove his foot, more grain began to flow which buried him deeper in the wheat. Within a few seconds, the worker was trapped in the sitting position with grain above his waist.

#### Emergency Response

Two co-workers were observing the victim as he became entrapped. One went to notify the elevator manager who called the local fire department. The other remained at the grain bin. The local fire department notified other surrounding fire departments and emergency rescue teams. Because of the remote location of the elevator, the first fire department rescue team arrived on site about 30 minutes after notification. Area farmers and workers were also notified. Several farmers were already at the elevator.

Elevator employees and farmers at the site tried to decide what to do. They began collecting material to build a retaining wall around the victim to prevent grain flow that would submerge the victim further under the grain. One farmer brought an acetylene torch to cut a hole in the bin.

Fire and rescue teams and a highway patrolman arrived on the site. The patrolman eventually took control of the assembled personnel outside the bin, while a fireman took control of the operation inside the bin. The decision was made not to cut a hole in the bin with a torch for fear of triggering a grain dust explosion or igniting a fire. Eventually, a tractor front-end loader was used to puncture the side of the bin to drain the grain out on the ground.

#### The Rescue Operation

None of the rescue teams had formal training in grain bin rescue operations, but some had practiced trench rescue operations. They applied the trench rescue techniques to this bin rescue. Paramedics stayed close to the victim. They informed him of what was going on, provided high flow oxygen through a non-rebreather mask, and gave him an I.V. of a saline plasma to maintain body temperature when the victim complained of being cold. The victim remained calm and in good condition throughout the rescue.

A retaining wall was built on the high sides of the grain out of lumber ranging from 1"x12" boards to 4'x8' sheets of plywood. When the hole was ripped in the bin wall with the front-end loader, grain began to flow out of the bin; but more grain also began to flow down around the victim. This was caused by both the vibration from the impact of the front-end loader against the bin and the flow of grain out of the side of the bin. Workers scooped grain away from the victim and out of the bin. A portable grain vacuum conveyor brought to the elevator was used to speed up the grain removal process next to the victim, reducing the manpower needed for hand scooping.

Three sets of retaining walls were finally established at spaced intervals away from the victim (Figure 1). The vacuum conveyor removed grain from inside the wall closest to the victim until wheat began to flow underneath the wall. Then, grain was removed from inside the next retaining wall. This process was repeated until the walls could be pushed further into the grain, and grain removed again from the wall closest to the victim. Several people were used to hold the retaining walls against the pressure of the grain on the back side of the walls. The rescuers attempted to use a round bale hay gate as a retaining wall, but half of it turned up on end because of the unequal pressure from the grain.

Rescuer protection was maintained by rotating workers in and out of the bin to give them a rest. Dust masks were worn and changed out periodically to protect against dust inhalation.

The victim was finally freed when all of the grain around his foot was removed, allowing him to move his foot sideways and pull it out from under the sweep auger motor. The victim was carried out on a stokes basket and taken to a hospital.

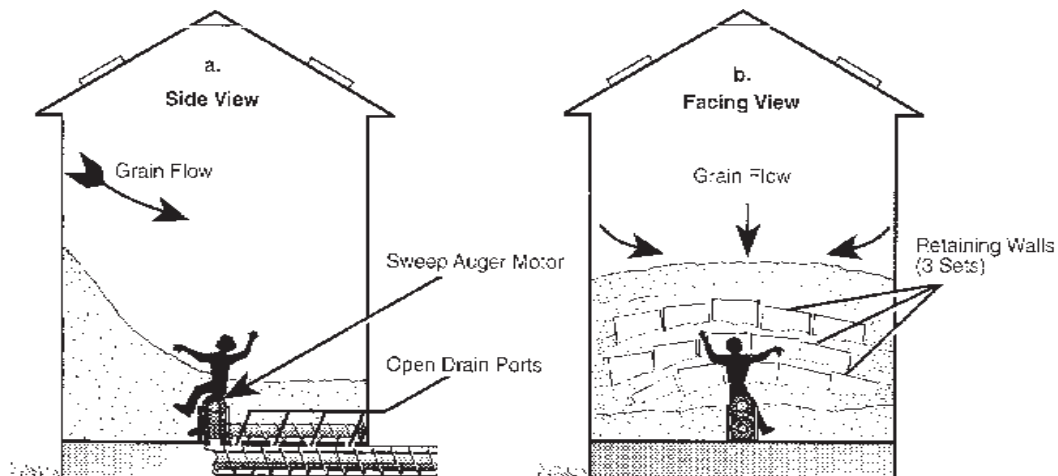
The victim suffered minor tissue damage from the pressure of the grain on his leg and foot, but has no apparent permanent injury. It took approximately five hours to remove the victim from the grain bin.

## Evaluation and Lessons Learned

The elevator workers, emergency rescue team members, and other personnel involved in this rescue are to be commended for their success in rescuing a healthy worker from a grain bin entrapment incident. Many things were done which aided in the success of the operation:

- Good communication between the paramedics and victim helped calm the victim and allowed for proper medical attention and care.
- Electrical power to unloading equipment was shut off and secured immediately to protect the victim and rescuers from accidental start up.
- The use of retaining walls to prevent additional grain flow around the victim kept the grain level below the victim's shoulders, which aided in breathing.
- The grain vacuum conveyor was valuable in expediting grain removal.
- Rescuers helped ensure their safety by wearing respiratory protection and rotating workers.
- The cooperation of all involved in the rescue allowed the victim to be removed safely.

The grain elevator where this incident occurred is taking action to prevent similar occurrences. Managers are having a stand made for workers to use when they are in the bin. This will keep them out of the grain while plugging in the sweep auger. This stand will straddle the sweep auger and provide protec-



**Figure 1.** The initial grain flow trapped the victim's foot against the sweep auger motor, then proceeded to bury him above the waist (a). Three sets of retaining walls were established to prevent further grain flow around the victim and aid in grain removal with a vacuum conveyor (b).

tion for workers by keeping them above both the grain and auger.

Knowing that a grain dust explosion was not a threat when using a cutting torch to cut steel covered with grain would have assisted the rescuers. A confined space with specific dust concentrations, as might be found in an operating grain leg or grain dump pit, is required for combustion of grain dust. This is not the case along the side of a filled grain bin. Hard red winter wheat typically contains a maximum of 0.6 pounds of dust per ton of grain. Concentrations of dust required for explosions with wheat dust are at least 50 grams of entrained dust per cubic meter of space. For explosions to occur, the dust must be entrained or uniformly suspended in the space. Most loose dust in stored wheat settles under the fill point and sifts to the bottom. Wheat against a bin or tank sidewall has very little grain dust and the dust is not entrained in the air, so there is no threat of a dust explosion.

Even though a dust explosion is not a risk when using a cutting torch, grain could catch fire and smolder or burn slowly under the right conditions (high temperature and relatively low moisture). The grain in this bin was in good condition and cool, so a fire was unlikely. However, a fire extinguisher or water hose should be on hand to put out any fires that could occur when a cutting torch is used to cut bin wall openings. Knowing that a dust explosion could not occur would have allowed a hole to be cut quickly in the side of the bin with a cutting torch or saw. The speed with which grain can be removed is more important the deeper the victim is buried in the grain.

A second factor which could have expedited the rescue was previous training on grain bin rescue operations. Grain elevators and local fire departments need to work together to practice on-site rescue operations and educate employees and rescuers about proper actions and techniques to use in case a grain entrapment occurs. Elapsed time is vital. Knowing the proper course of action can reduce rescue time and give workers and rescuers confidence in the difficult decisions they must make during a bin rescue emergency. Grain elevator workers should have needed rescue equipment on hand or know where it is located and how to acquire it quickly.

Several personnel at the site commented that no one immediately took charge of the rescue operation. Elevator employees and farmers on site first began the rescue operation. As more people and multiple fire and rescue teams arrived, each had different ideas on how to rescue the

entrapped victim. Several courses of action were discussed and considered before a chain of command was finally established. A state highway patrolman took charge of the personnel outside the bin, and a fireman took charge of the operation inside the bin.

Establishing effective command and control is essential in minimizing rescue time and conducting a successful rescue operation. Lack of a well-defined authority can hinder the efforts of rescue workers. Information on the status of the victim, resources available, and current activities taking place must be quickly and accurately conveyed to the rescue team upon arrival. The rescue team should then establish an incident command post and assign an incident commander.

Emergency rescue teams should be familiar with the Incident Command System, a standardized emergency management system developed to organize and manage all the functions required to deal with an emergency situation.<sup>1</sup> This system is designed to allow the leader to command the incident and to prevent the incident from commanding the leader. An incident commander should be assigned quickly to establish a final authority for all decisions. Specialists and those familiar with the site should act as advisors to the incident commander to assist in making decisions about the rescue operation.

Failing to establish leadership and command roles is a common problem with rural rescue operations that occurs when more than one jurisdiction or agency is involved in an incident. Mutual aid agreements between rescue teams in the same response area can define roles and responsibilities to reduce the potential for disagreements and problems and minimize response time.

Elevator managers should check with local emergency rescue teams and assist them in pre-incident planning. A pre-incident plan involves developing and maintaining a written plan for response to and management of a rescue.<sup>1</sup> It allows information to be gathered and for as many decisions as possible to be made before an incident occurs. This will help the rescue team in managing the incident, rather than simply reacting to it. Once again, practicing a rescue operation on site with multiple rescue teams is invaluable training for both the elevator and rescue personnel, and it enhances total community preparation for when an incident does occur.

<sup>1</sup>Robert A. Worsing, Jr., MD, Rural Rescue and Emergency Care (Rosemont, IL: American Academy of Orthopedic Surgeons, 1993) 15-19.

# Grain Bin Entrapment Prevention

## Know How It Can Happen and Preventive Measures

Primarily, there are three different ways in which people become trapped in grain. All of them are associated with unloading. Educate workers on the circumstances that can lead to grain bin entrapment, and know the precautions to take to prevent a grain entrapment incident.

### 1. Flowing Grain

During unloading, the grain in a bin flows downward from the top center of the bin, creating a “funnel” effect that draws material and objects down to the conveyor. An unloading auger at the bottom of the bin transports the grain outside. It only takes two to three seconds to become helpless in flowing grain. Flowing grain acts like quick sand and can pull a worker under and cause suffocation (Figure 2). This can also happen inside a gravity wagon.

#### Prevention:

- Warn family, employees, and visitors of dangers in flowing grain.
- Place warning decals on all bin entrances and gravity wagons.
- Turn off and lock out power controls to unloading conveyors before entering a bin, using “lock-out / tag out” procedures.
- Always use a safety harness, safety line, and at least two observers during bin entry.
- Tie a permanent life-line in the bin for a person trapped in grain flow to grab on to (i.e., a rope hanging down the center with knots tied every few feet).
- Secure grain storage areas to prevent unauthorized entry.

### 2. Collapse of a Grain Bridge

A grain bridge can form when grain on the surface is moldy or is frozen together to form a hard, thick crust. When grain is unloaded from a bin with a surface crust, a hollow cavity forms underneath the grain bridge. If an individual enters the bin and attempts to walk on the crusted surface, the additional weight will cause the

crust to collapse and the individual could be partially or completely submerged instantly. The shifting grain can move the victim four to five feet from the point of entry where the victim was last seen, making it difficult to determine exactly where the victim is located (Figure 3).

#### Prevention:

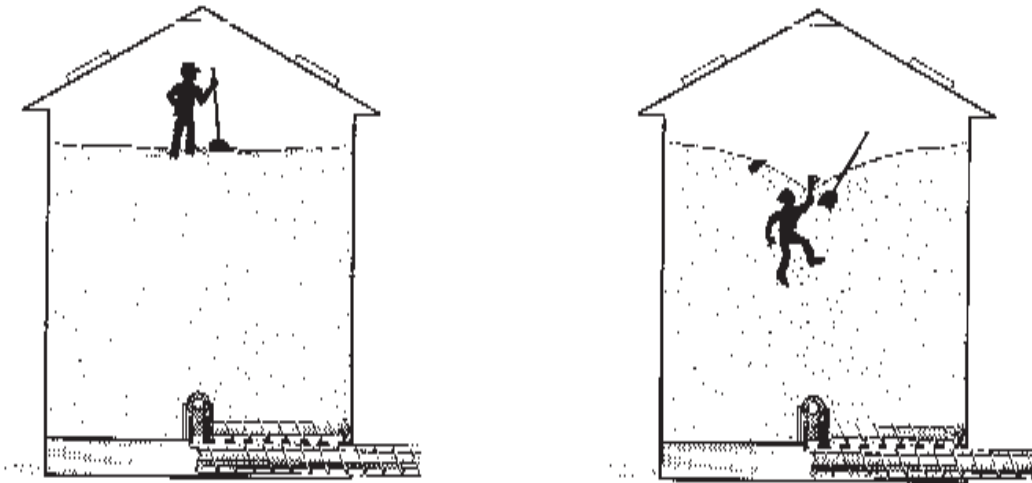
- To detect whether a grain bridge exists, always look for an inverted cone after unloading from a bin. The newly exposed grain surface should look shiny. If it does not, a bridge may have formed.
- Use a pole or other object to free the bridge from the bin roof hatch or from the inside ladder while tied to the ladder securely. Do not stand on the grain surface.
- Carry a long pole when entering bins to probe grain for cavities and stabilize the worker in case of grain flow.
- Manage grain to avoid conditions that cause spoilage and bridging.

### 3. Avalanche of a Vertical Grain Wall

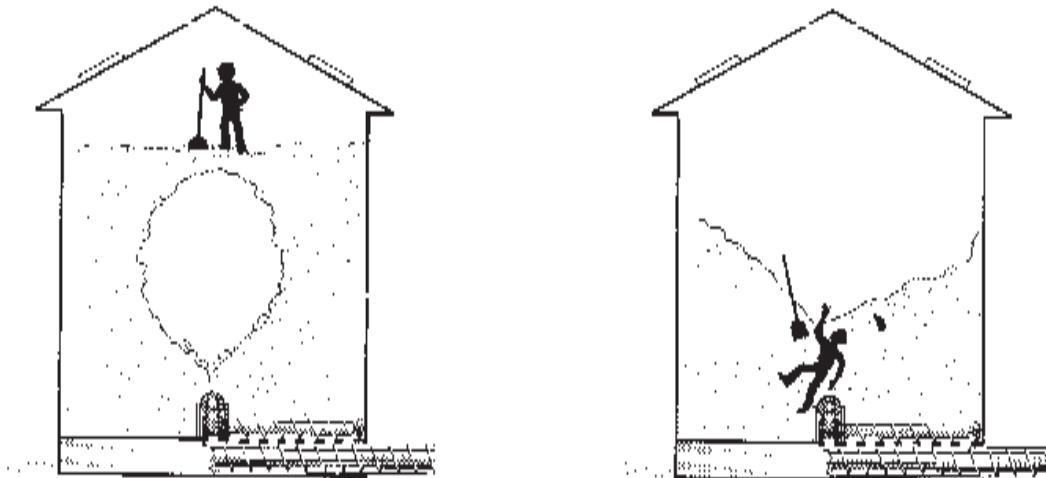
Grain in bad condition can cake in large vertical columns against the bin wall. Workers may try to dislodge the grain by poking it with a stick or shovel. This can cause the grain wall to break free and result in an avalanche that can completely bury workers inside the bin (Figure 4).

#### Prevention:

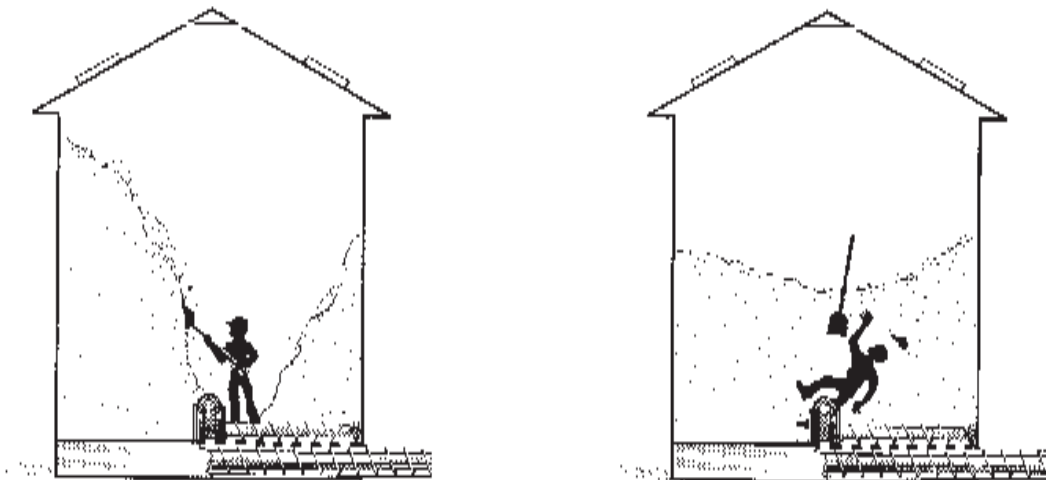
- Use a body harness and safety rope that is securely tied off.
- Work from top to bottom of a vertical grain wall, staying above the highest part of the wall.
- Be prepared for the entire grain wall to break free and fall at any time.
- Manage grain to avoid conditions that cause spoilage and formation of vertical grain walls.



**Figure 2.** Entrapment can occur quickly as an unloading auger draws grain from the top center, forming a surface cone as the bin is emptied.



**Figure 3.** Grain can form a hard crust which appears to be firm enough to walk on. However, the crust can break and instantly bury an individual in the hollow cavity that formed underneath the bridge.



**Figure 4.** If broken up from below, a steep wall of grain can break free and cause an avalanche that could bury workers inside the bin.

# Grain Bin Rescue Procedures

1. Be sure the auger or unloading equipment is shut off and locked out.
2. Contact an emergency rescue team or fire department.
3. Ventilate the bin with an aeration system, if one is present. Do not activate the heat source.
4. Avoid putting additional pressure on the victim.
  - a. Stay away from the area immediately around the victim.
  - b. Use a ladder, plywood, or other material to distribute weight.
  - c. Keep unnecessary personnel out of the grain bin.
5. Protect rescuers.
  - a. Attach safety lines to rescuers.
  - b. Use respiratory protection as required; i.e., dust filter masks, filter respirators, or SCBA.
6. Construct a retaining wall if the surrounding grain slope is above victim's head.
  - a. Use plywood, sheet metal, large trash cans with the bottoms removed, or heavy cardboard cylinders to keep grain from the victim's chest area or higher.
  - b. Build a self-supporting box or brace walls to prevent collapse.
  - c. You may need a series of retaining walls.
7. Remove grain from around the victim.
  - a. Attach a harness to the victim to prevent further submersion in the grain, but don't try to pull the victim with a line and harness before removing the grain (hoist or block and tackle removal can cause serious injury).
  - b. Use a vacuum conveyor or scoop to remove grain from around victim.
  - c. Be careful when parts of the victim are not visible to avoid further injury.
8. Cut holes in the bin and drain.
  - a. Do this immediately if the victim is completely submersed.
  - b. Cut at least two holes on opposite sides; three to four holes symmetrically spaced are recommended. More holes can be cut for large bins.
  - c. Use a U-shaped or V-shaped cut.
  - d. Make a cut about 30 to 40 inches across between the bolt lines of a single sheet (do not cut across vertical or horizontal bin sheet joints).
  - e. Locate holes just below the feet of a partially submerged victim or as low as possible if victim is not visible.
  - f. You can use an air chisel, power saw, tractor loader, or cutting torch.
  - g. Drain the grain uniformly from two, three, or four holes around the bin.
9. Provide care for the victim.
  - a. Assist the victim's breathing by using oxygen or SCBA.
  - b. Maintain body temperature with saline plasma I.V. or other means.
  - c. Communicate with the patient about his/her condition and the rescue activities taking place.
  - d. Plan ahead for removal of the patient from the bin.
10. Be patient and don't give up (victims have survived complete burial in grain for two hours).

## For More Information

For more information on grain bin safety, contact the Biosystems and Agricultural Engineering Department at Oklahoma State University (phone: 405-744-5427).

## The Oklahoma Cooperative Extension Service Bringing the University to You!

The Cooperative Extension Service is the largest, most successful informal educational organization in the world. It is a nationwide system funded and guided by a partnership of federal, state, and local governments that delivers information to help people help themselves through the land-grant university system.

Extension carries out programs in the broad categories of agriculture, natural resources and environment; family and consumer sciences; 4-H and other youth; and community resource development. Extension staff members live and work among the people they serve to help stimulate and educate Americans to plan ahead and cope with their problems.

Some characteristics of the Cooperative Extension system are:

- The federal, state, and local governments cooperatively share in its financial support and program direction.
- It is administered by the land-grant university as designated by the state legislature through an Extension director.
- Extension programs are nonpolitical, objective, and research-based information.
- It provides practical, problem-oriented education for people of all ages. It is designated to take the knowledge of the university to those persons who do not or cannot participate in the formal classroom instruction of the university.
- It utilizes research from university, government, and other sources to help people make their own decisions.
- More than a million volunteers help multiply the impact of the Extension professional staff.
- It dispenses no funds to the public.
- It is not a regulatory agency, but it does inform people of regulations and of their options in meeting them.
- Local programs are developed and carried out in full recognition of national problems and goals.
- The Extension staff educates people through personal contacts, meetings, demonstrations, and the mass media.
- Extension has the built-in flexibility to adjust its programs and subject matter to meet new needs. Activities shift from year to year as citizen groups and Extension workers close to the problems advise changes.

Oklahoma State University, in compliance with Title VI and VII of the Civil Rights Act of 1964, Executive Order 11246 as amended, Title IX of the Education Amendments of 1972, Americans with Disabilities Act of 1990, and other federal laws and regulations, does not discriminate on the basis of race, color, national origin, gender, age, religion, disability, or status as a veteran in any of its policies, practices, or procedures. This includes but is not limited to admissions, employment, financial aid, and educational services.

Issued in furtherance of Cooperative Extension work, acts of May 8 and June 30, 1914, in cooperation with the U.S. Department of Agriculture, Robert E. Whitson, Director of Cooperative Extension Service, Oklahoma State University, Stillwater, Oklahoma. This publication is printed and issued by Oklahoma State University as authorized by the Vice President, Dean, and Director of the Division of Agricultural Sciences and Natural Resources and has been prepared and distributed at a cost of 20 cents per copy. 0602